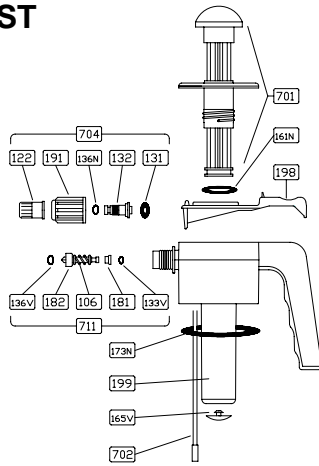


PARTS LIST



106	842500 SPRING
122	842501 1mm NOZZLE WASHER
131	842502 FLAT WASHER
132	842503 WHIRL WIND
133V	842504 AN-3 VITON GASKET
136N	842505 AN-5 NITRILE GASKET
136V	842506 AN-5 VITON GASKET
161N	842507 3-911 NITRILE GASKET
165V	842508 CHAMBER VALVE
173N	842509 2-227 NITRILE GASKET
181	842510 SHAFT BUSHING
182	842511 SHAFT SEAL
191	842512 NUT FOR NOZZLE
197	842513 BOTTLE 1.5 lts.
198	842514 TRIGGER
199	842515 BODY
701	842516 PUMP TUBE W/COVER
702	842517 HOSE WITH FELT
703	842518 COMPLETE BODY
704	842519 COMPLETE NOZZLE
711	842520 COMPLETE SHUTTER
1411	842639 REPAIR KIT (842505, 842507, 842508, 842509)

INITIAL SETUP

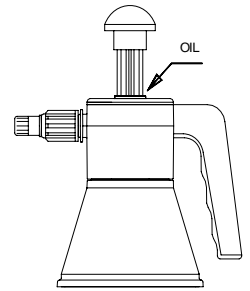
Unscrew head of bottle. Fill in the tank with material to be sprayed (maximum 1 lt.). Replace the head and tighten firmly. Pump the top knob 20~ 25 strokes. To spray, press the trigger (198) and move the nozzle (122) to obtain the desired spray pattern. Use the yellow lever to lock the trigger on. Over time, pressure will diminish and you will need to pump again.

MAINTENANCE

After use, clean all internal and external components of sprayer. Use liquid detergent and clean water. Rinse with clean water only.

ALWAYS RELEASE PRESSURE AFTER USE AND CLEAN BEFORE STORAGE.

To prevent drying of gaskets, lubricate with oil in area shown in illustration when not in use. Nozzle (122) be can be cleaned of obstructions by a stream of water or a soft cleaning instrument. Use caution not to damage spray orifice.



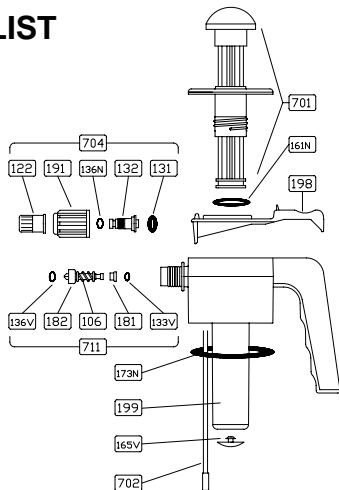
GENERAL PRECAUTIONS

Work only in well ventilated rooms and with proper protective equipment. Avoid contact with skin and eyes. Refrain from eating, drinking and smoking. Wash hands and face after preparation, as well as when work is completed. Read and be aware of the instructions on chemical labels and manual. Do not spray toward people, animals, and nearby electrical components. In case of ingestion or inhalation, go to the doctor or the nearest hospital and bring the product label.

Never use alkaline, acids, flammable products or combustion-enhancing compounds. Sprayers are to be used only with herbicides, insecticides and fungicide for plants. Do not expose to the sunshine. Do not mix chemicals.

MARUYAMA RESERVES THE RIGHT TO CHANGE PRODUCT SPECIFICATIONS WITHOUT NOTICE

PARTS LIST



106	842500 SPRING
122	842501 1mm NOZZLE WASHER
131	842502 FLAT WASHER
132	842503 WHIRL WIND
133V	842504 AN-3 VITON GASKET
136N	842505 AN-5 NITRILE GASKET
136V	842506 AN-5 VITON GASKET
161N	842507 3-911 NITRILE GASKET
165V	842508 CHAMBER VALVE
173N	842509 2-227 NITRILE GASKET
181	842510 SHAFT BUSHING
182	842511 SHAFT SEAL
191	842512 NUT FOR NOZZLE
197	842513 BOTTLE 1.5 lts.
198	842514 TRIGGER
199	842515 BODY
701	842516 PUMP TUBE W/COVER
702	842517 HOSE WITH FELT
703	842518 COMPLETE BODY
704	842519 COMPLETE NOZZLE
711	842520 COMPLETE SHUTTER
1411	842639 REPAIR KIT (842505, 842507, 842508, 842509)

INITIAL SETUP

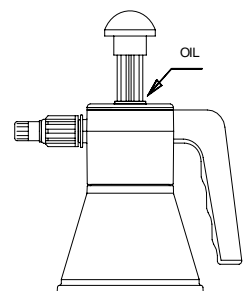
Unscrew head of bottle. Fill in the tank with material to be sprayed (maximum 1 lt.). Replace the head and tighten firmly. Pump the top knob 20~ 25 strokes. To spray, press the trigger (198) and move the nozzle (122) to obtain the desired spray pattern. Use the yellow lever to lock the trigger on. Over time, pressure will diminish and you will need to pump again.

MAINTENANCE

After use, clean all internal and external components of sprayer. Use liquid detergent and clean water. Rinse with clean water only.

ALWAYS RELEASE PRESSURE AFTER USE AND CLEAN BEFORE STORAGE.

To prevent drying of gaskets, lubricate with oil in area shown in illustration when not in use. Nozzle (122) be can be cleaned of obstructions by a stream of water or a soft cleaning instrument. Use caution not to damage spray orifice.



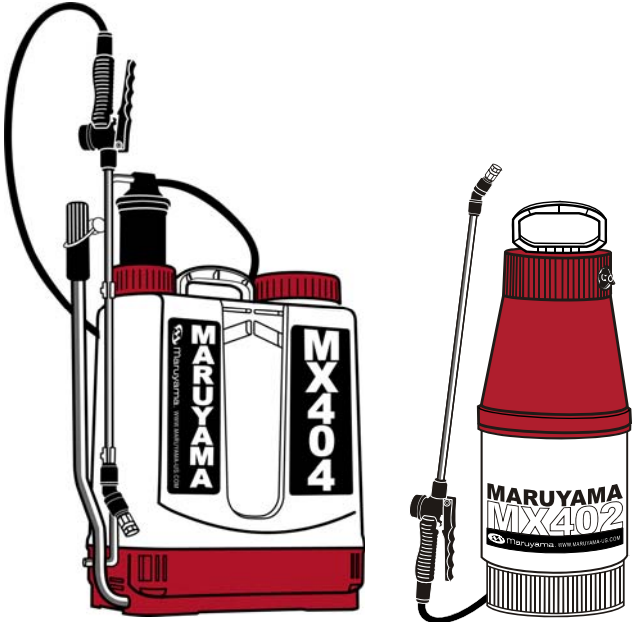
GENERAL PRECAUTIONS

Work only in well ventilated rooms and with proper protective equipment. Avoid contact with skin and eyes. Refrain from eating, drinking and smoking. Wash hands and face after preparation, as well as when work is completed. Read and be aware of the instructions on chemical labels and manual. Do not spray toward people, animals, and nearby electrical components. In case of ingestion or inhalation, go to the doctor or the nearest hospital and bring the product label.

Never use alkaline, acids, flammable products or combustion-enhancing compounds. Sprayers are to be used only with herbicides, insecticides and fungicide for plants. Do not expose to the sunshine. Do not mix chemicals.

MARUYAMA RESERVES THE RIGHT TO CHANGE PRODUCT SPECIFICATIONS WITHOUT NOTICE

OTHER SPRAYER PRODUCTS



**BACKPACK
SPRAYER**

**PRESSURIZED
SPRAYER**

DISTRIBUTED BY Maruyama U.S., Inc.
3570 Shelby Lane
Denton, Texas 76207
940-383-7400 940-383-7466 (Fax)
Website: www.maruyama-us.com



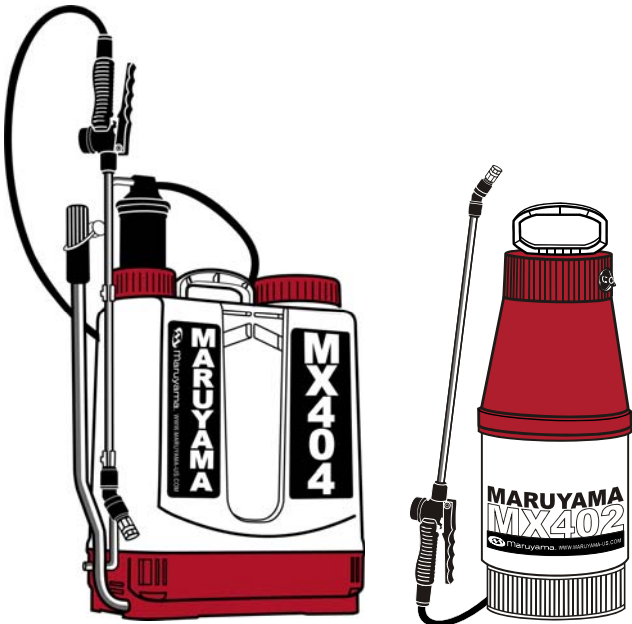
**PRESSURIZED
HAND SPRAYER**

1.5 LITER / 50 OZ



READ INSTRUCTIONS THOROUGHLY BEFORE USING

OTHER SPRAYER PRODUCTS



**BACKPACK
SPRAYER**

**PRESSURIZED
SPRAYER**

DISTRIBUTED BY Maruyama U.S., Inc.
3570 Shelby Lane
Denton, Texas 76207
940-383-7400 940-383-7466 (Fax)
Website: www.maruyama-us.com



**PRESSURIZED
HAND SPRAYER**

1.5 LITER / 50 OZ



READ INSTRUCTIONS THOROUGHLY BEFORE USING